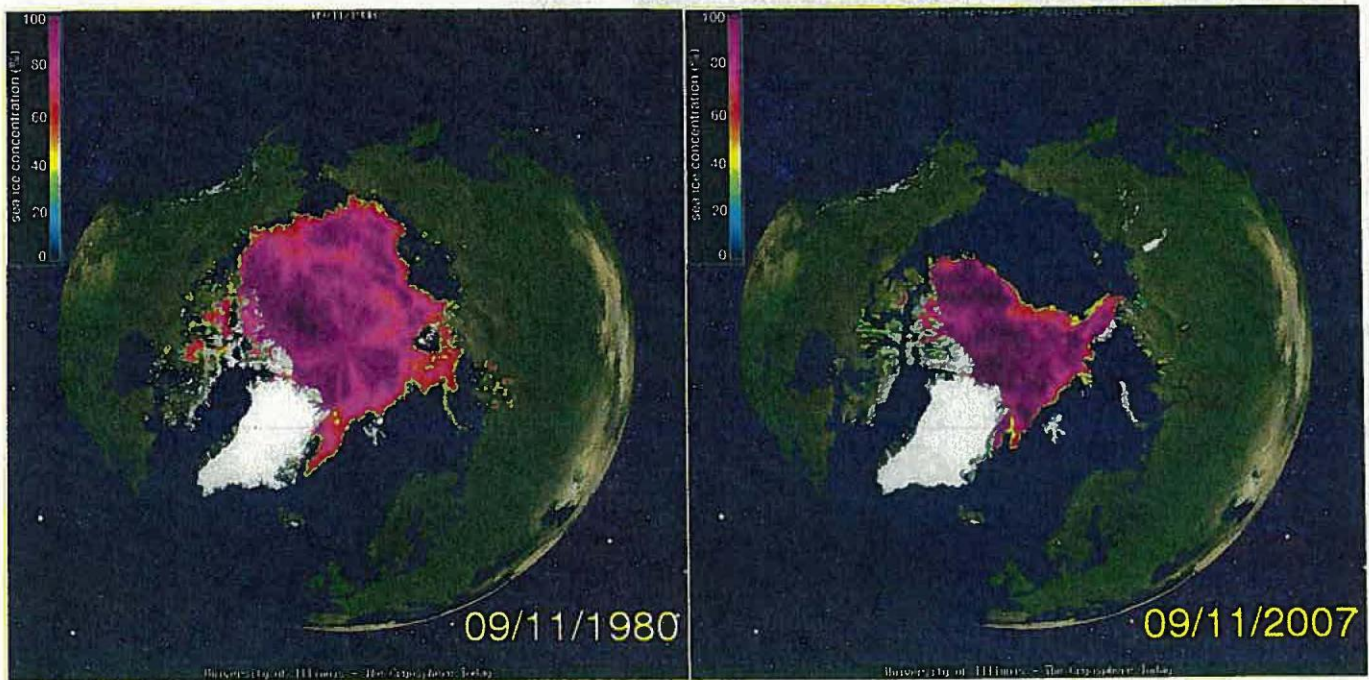


Ice Melting in the Arctic

September 11, 1980

September 11, 2007

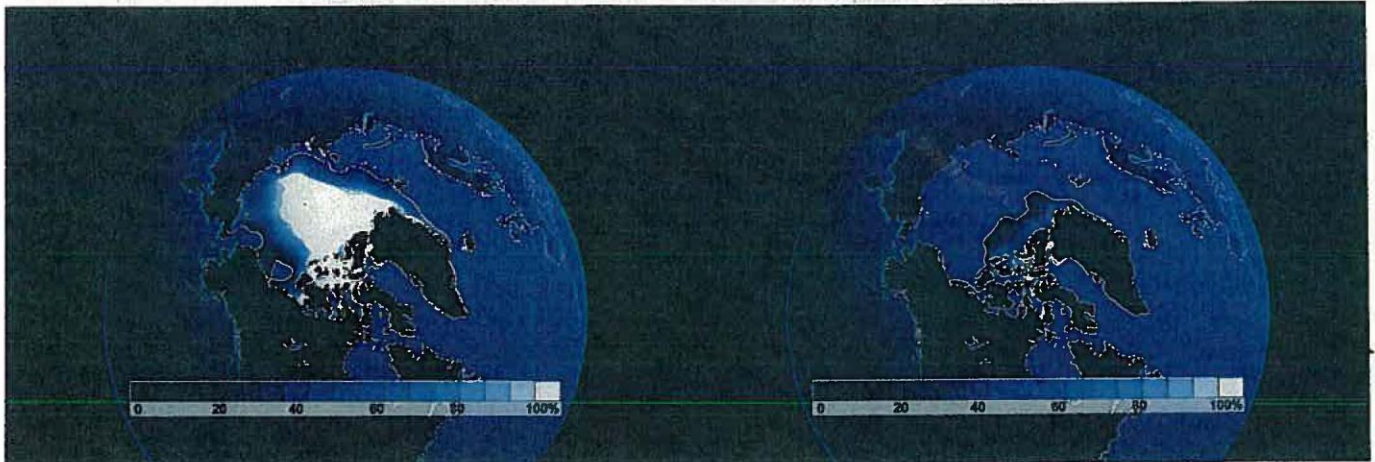


Source: University of Illinois- The Cryosphere Today

Arctic Sea Ice Summer Minimum:

2000

2040



Based on this simulation, the extent of late-summer ice could begin to retreat abruptly within several decades. Unless greenhouse gas emissions are significantly reduced, by around 2040, the Arctic may be nearly absent of sea ice.

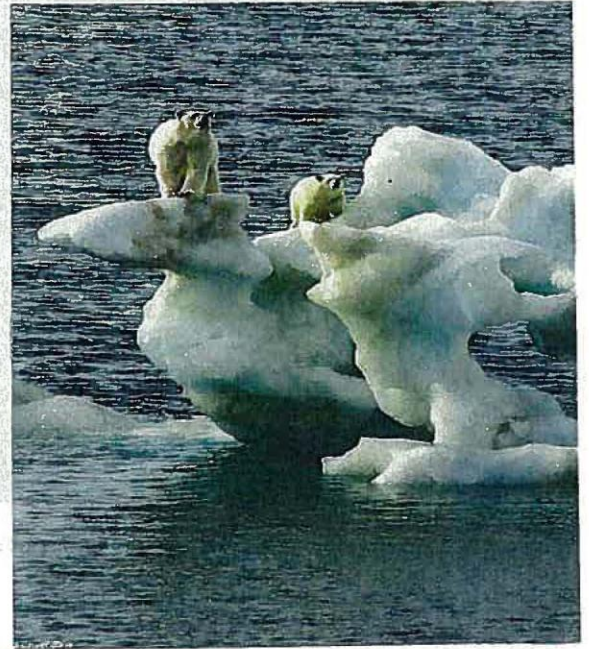
Source: © UCAR

Erosion at Shishmaref, Alaska, due to reduced coastal ice
Source: © Diana Haecker, The Nome Nugget



"The ice is starting to melt earlier, and quicker. I'm worried. I'm worried for my future and the future generations. Our culture will no longer exist. It will be gone."

~ Ludy Pudluk, Native resident of Resolute, Nunavut.
© MMVII, CBS Interactive Inc.



Shishmaref, Alaska. The image below (left) was taken before a violent storm hit the banks of the village. Notice the trash can in the image below left and then in the image below right. The image below right was taken after the violent storm eroded away the coast line.

Source: The Nome Nugget Newspaper



Inuit petition to the Inter-American Commission on Human Rights (2005),

http://www.ciel.org/Climate/ICC_Petition_7Dec05.html

Maldives submission on climate change and human rights to the UN office of the High Commissioner on Human Rights (2008),

http://www2.ohchr.org/english/issues/climatechange/docs/submissions/Maldives_Submission.pdf